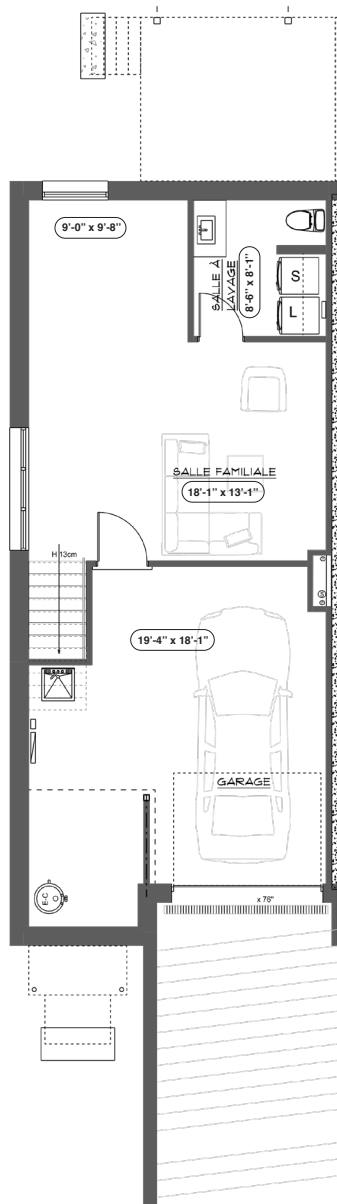
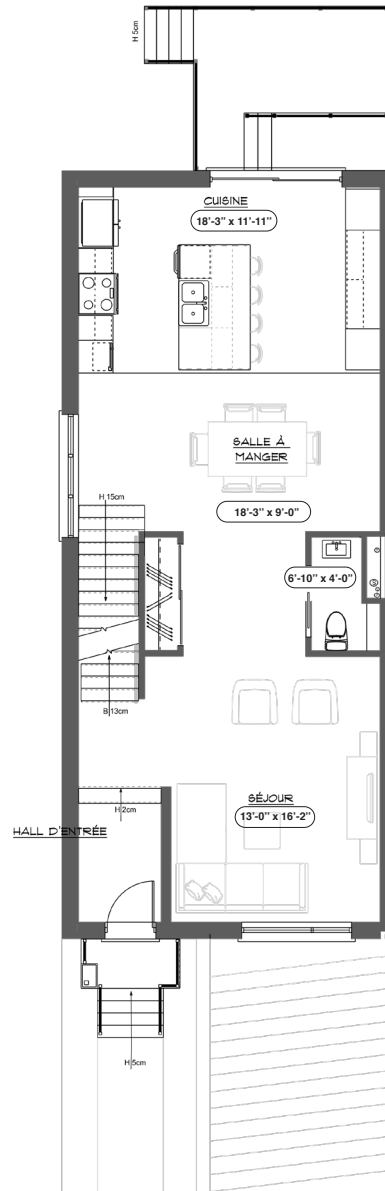


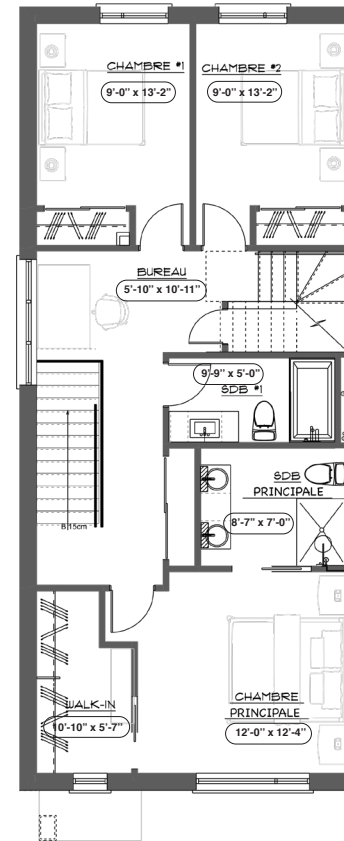
**Sous-sol habitable 420 pi.ca**  
**Niveau garage 341 pi.ca**



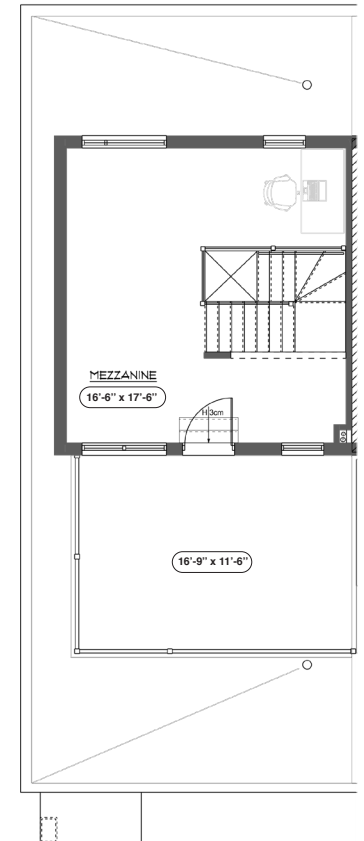
**1<sup>er</sup> étage 813 pi.ca**  
**Terrasse 131 pi.ca**



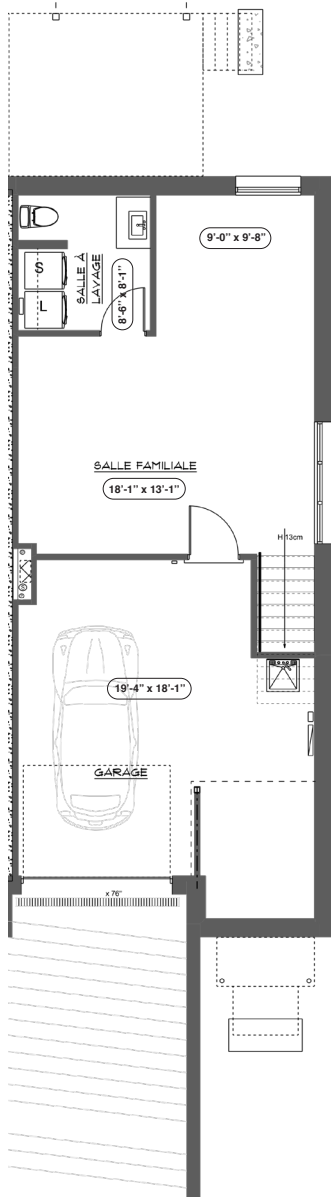
**2<sup>eme</sup> étage 817 pi.ca**



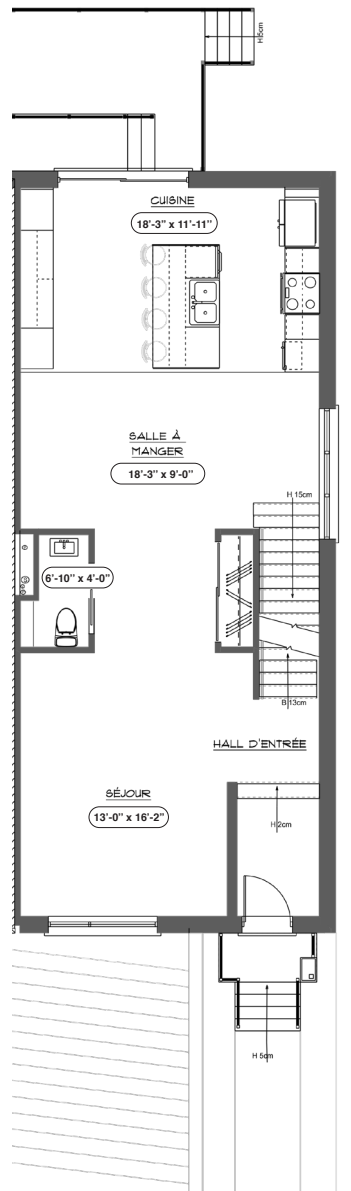
**Mezzanine 289 pi.ca**  
**Terrasse 204 pi.ca**



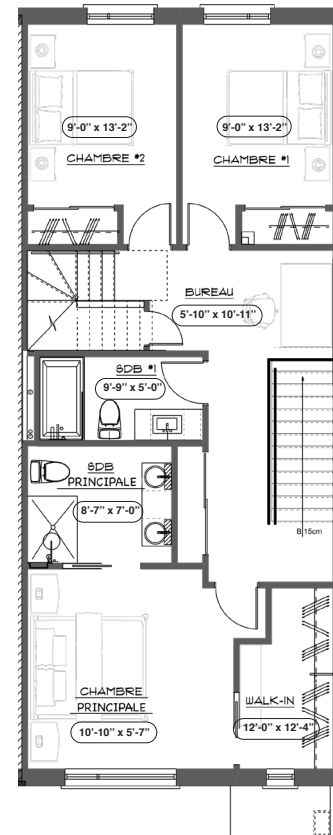
**Sous-sol habitable 420 pi.ca**  
**Niveau garage 341 pi.ca**



**1<sup>er</sup> étage 813 pi.ca**  
**Terrasse 131 pi.ca**



**2<sup>ème</sup> étage 817 pi.ca**



**Mezzanine 289 pi.ca**  
**Terrasse 204 pi.ca**

